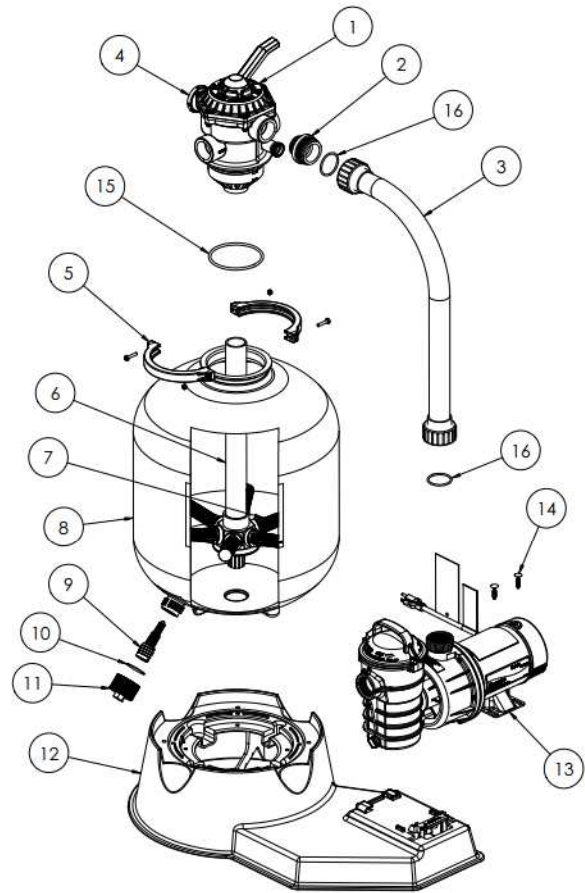


SAND DOLLAR® FILTER SYSTEMS

REPLACEMENT PARTS FOR SYSTEMS MANUFACTURED 2009 AND BEYOND



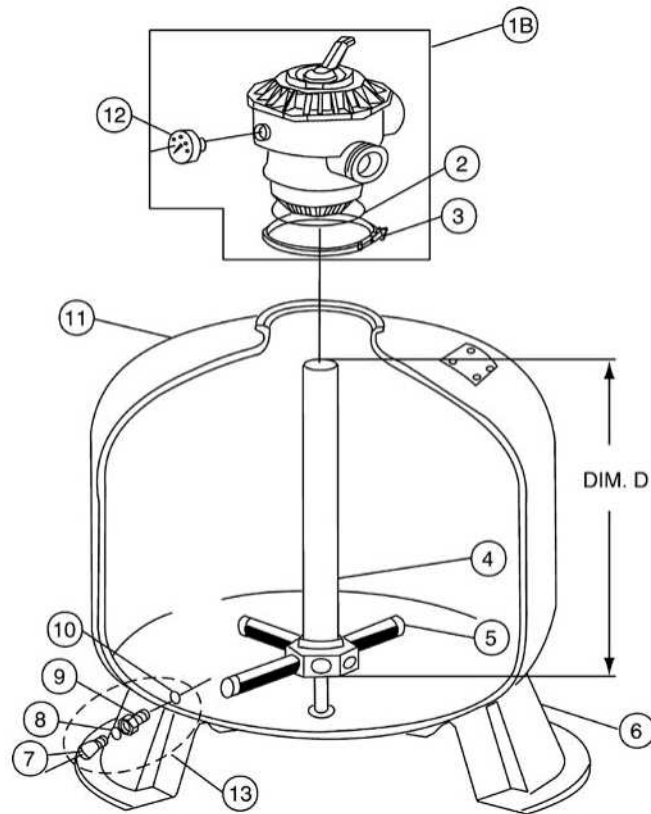
Item	Part No.	Description
SAND DOLLAR FILTER SYSTEMS 2009 AND BEYOND		
1	262506	Valve, 1-1/2 Inch, 6-Way
2	354588	Adaptor, NPT to Buttress
3	155709	Pump to Filter Assembly (Dynamo to SD35)
3	155710	Pump to Filter Assembly (Dynamo to SD40)
3	155711	Pump to Filter Assembly (Dynamo to SD60)
4	190059	Pressure Gauge
5	152165	Clamp Assembly
6	152229	Piping Assembly – SD35
6	152228	Piping Assembly – SD40
6	152227	Piping Assembly – SD60
7	150084	Lateral – SD 35 & SD 40
7	150085	Lateral – SD60
8	145339	Tank w/ Drain – SD35
8	145341	Tank w/ Drain – SD40
8	145343	Tank w/ Drain – SD60
9	154711	Sand Drain
10	154715	Gasket (Sand Drain)
11	154712	Drain Cap
12	155333P	Systems Base
12	155333CP	Systems Base, CSA Pump
13		Dynamo Pump Page 536
14	710009	Base Hardware Kit
15	272541	O-Ring Valve Body
16	354571	O-Ring, Union
NOT SHOWN		
	155151	Kit, Flex Hose, 6 ft. ¹
	155005	Kit, Flex Hose, 12 ft. ¹



¹ Replacement Hose Kits include two (2) hoses, four (4) hose adaptors and four (4) hose clamps.

SAND DOLLAR® FILTERS

REPLACEMENT PARTS FOR BLOW MOLDED FILTERS



Item	Part No.	Description
SAND DOLLAR SAND FILTERS		
1B	262506	Valve 1-1/2 in. 6-way
1B	263085	Valve 2 in.
1B	262525	Valve 2 in. with unions
2	272541	O-ring valve body
3	152165	Assembly, plastic clamp 2 piece
4	155504	Piping assembly SD35, dim D = 16 in.
4	152229	Pipe assembly SD35 ³
4	155062	Piping assembly SD40, dim D = 20-1/8 in.
4	152228	Pipe assembly SD40 ³
4	155532	Piping assembly SD60, dim D = 25-1/4 in.
4	152227	Pipe assembly SD60 ³
4	152000	Pipe assembly, SD70
4	152226	Pipe assembly SD80
4	152238	Pipe assembly SD80 2 in.

Item	Part No.	Description
SAND DOLLAR SAND FILTERS		
5	155007	Lateral 5, 11/32 in. long, almond, SD35, 8 req.
5	152290	Lateral 6, 11/16 in. long, almond, SD40/SD60, 8 req.
5	150084	Lateral, SD35, SD40, black ³
5	150085	Lateral XLong, SD60, SD70, SD80, black ³
6	154926	Foot, SD35
6	150088	Lateral, ClearPro 6 req
6	154520	Foot, SD40, SD60, SD70, & SD80 ¹
7	154699	Plug, 1/4 in. NPT drain
8	154715	Gasket
9	154711	Drain
10	154715	Gasket
11	145339	Tank with drain SD35, almond
11	145341	Tank with drain SD40, almond
11	145343	Tank with drain SD60, almond
11	145368	Tank with drain SD70, almond
11	145334	Tank with drain SD80, almond
12	190059	Gauge, pressure
13	150053	Drain plug assembly ²
13	150055	Drain plug assembly 80
NOT SHOWN		
	154712	1.5 in. drain cap
	154715	O-ring for drain cap
	272569	Kit Union for 2 in. Valve
	150119	Kit Union for 1-1/2 in. Valve